

CABOT SHIPPING SUPPLIES LTD.
 106 Burbridge Avenue
 Dartmouth, Nova Scotia
 B3B 0G6

TOLL FREE 1-800-565-0606
HRM (902) 468-2057
FAX (902) 468-2251
EMAIL sales@cabotss.com

DELIVERY IN 7 TO 10 DAYS!

SAVE ON THESE WINTER ESSENTIALS!

BOA LINED SPLIT GRAIN WINTER MITTS

- Full boa lining provides superior warmth and comfort
- Rugged split cowhide leather construction
- Good abrasion resistance
- Size: One Size

Model No.
SGV409

PROMO PRICE
5 15
 /Pair



ZENITH
 Safety Products

GRAIN COWHIDE LEATHER FLEECE-LINED GLOVES

- Superior abrasion resistance
- Excellent comfort and durability
- Resists oil and water well
- Full leather-tipped fingers and knuckle strap
- 2-1/2" elastic cuff eliminates dirt and debris from entering the glove



SEB613

Model No.	Size	PROMO PRICE
SEH145	Medium	6.05/Pair
SEB613	Large	6.25/Pair

ZENITH
 Safety Products

FLEECE BALACLAVA

- Can be used under hardhats
- Protects the head, face & neck from the harsh elements of winter
- Versatile; can be worn as a balaclava, neck warmer or as a dust mask
- Machine wash & air dry
- One size fits all

ZENITH
 Safety Products

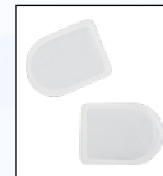
Model No. SGJ655

PROMO PRICE
5 15



HAND & TOE WARMERS

- Fits easily inside your pockets, mitts, gloves, boots or shoes
- Single use



SGU490



SGO961

ZENITH
 Safety Products

Model No.	Description	Hours of Effective Warmth	PROMO PRICE
SGU490	Toe Warmers, 2/Pkg.	6 hrs.	0.95/Pkg.
SGO961	Hand Warmers, 2/Pkg.	8 hrs.	0.80/Pkg.

WINTER LINERS

- Winter liners give you added protection in cold conditions or on windy days
- Can be worn with caps, hats, welding helmets, hard hats or alone
 - Flame resistant outer shell
 - One size fits all
 - SAJ553: Single twill layer with napped inside
 - SGU852 & SGU851: Twill outer layer

Mild Cold
SAJ553



Severe Cold
SGU851



Moderate Cold
SGU852



Model No.	Lining Material	Type	PROMO PRICE
SAJ553	Unlined	Mild Cold	5.90
SGU852	Poly-Cotton	Moderate Cold	8.20
SGU851*	Sheep	Severe Cold	11.95

* Full neck flap

KNIT HATS WITH REFLECTIVE STRIPE

- Silver reflective stripe woven into the hat
- Material: Acrylic
- One size fits all



SGJ105



SGI135



Model No.	Colour	PROMO PRICE
SGI135	High Visibility Orange	6.50
SGJ105	Black	6.50

ANTI-SLIP ICE CLEATS

- Special non-slip studs offer excellent traction on ice and snow
- Non-slip flexible ice cleats
- Includes 10 durable spikes
- Made from thermoplastic elastomer
- Flexible up to -40°C
- Traction Material: Steel
- Traction Type: Stud



Boot Not Included



Model No.	Size	Fits Shoe Size	PROMO PRICE
SEA004	Medium	5-8	11.95/Pair
SEA005	Large	8-11	11.95/Pair
SEA006	X-Large	11-13	11.95/Pair

HEAVY-DUTY ANTI-SLIP ICE CLEATS

- Hexagonal, non-slip studs offer excellent traction on ice and snow
- Non-slip heavy duty flexible rubber boot
- Includes 12 durable spikes
- Made from thermoplastic elastomer
- Flexible up to -40°C
- Traction Material: Steel
- Traction Type: Stud



Model No.	Size	Fits Shoe Size	PROMO PRICE
SDN085	Medium	5-8	14.95/Pair
SDN086	Large	8-11	14.95/Pair
SDN087	X-Large	11-13	14.95/Pair

ANTI-SLIP SPARK-PROOF ICE CLEATS

- Non-slip studs offer excellent traction on ice and snow
- Includes 10 durable brass spikes
- Made from thermoplastic elastomer
- Flexible up to -40°C
- Non-slip, heavy-duty, flexible rubber boot
- Traction Material: Brass
- Traction Type: Stud



Boot Not Included



Model No.	Size	Fits Shoe Size	PROMO PRICE
SGO246	Medium	5-8	16.95/Pair
SGO247	Large	8-11	16.95/Pair
SGO248	X-Large	11-13	16.95/Pair

ALL PURPOSE TRACTION AID



- Pulse Grip tread design over a large surface area provides more traction on all surfaces
- Well positioned Ice Diamond™ spikes provide more comfort under the foot and improved traction
- Improved heel fit for better performance
- Geometrically designed webbing and improved shape comfortably fit a greater variety of footwear
- Traction Type: Stud
- Traction Material: Tungsten Carbide



Boots not included

Model No.	MFG No.	Size	PROMO PRICE
SEB972	V3550270-S	Small	33.49/Pair
SEB971	V3550270-M	Medium	33.49/Pair
SEB970	V3550270-L	Large	33.49/Pair
SEB973	V3550270-XL	X-Large	39.49/Pair

HEAVY-DUTY TRACTION AID

- Molded in tungsten carbide spikes maximizes traction, and virtually eliminates the possibility of losing spikes
- Integral retention strap ensures a secure fit in all conditions
- Industrial grade sole made from exclusive rubber compound that offers unparalleled grip and maximum durability
- Textured 'diamond knurling' lining grips footwear and helps keep traction aids in place
- Traction Type: Stud
- Traction Material: Tungsten Carbide



Boots not included



Model No.	MFG No.	Size	Fits Shoe Size		PROMO PRICE
			M	W	
SGQ705	V3550570-S	Small	4-7	5-8	55.99/Pair
SGQ706	V3550570-M	Medium	7.5-10	8.5 - 11	55.99/Pair
SGQ707	V3550570-L	Large	10.5-13	11.5-13	55.99/Pair
SGQ708	V3550570-XL	X-Large	13.5-15	-	62.99/Pair

GRIPPRO™ SPIKELESS TRACTION AIDS

- 11 (22/pair) patented hi-viz chevrons are strategically placed to increase grip and reduce the risk of slips and falls
- Specially designed treads channel water away to deliver enhanced traction
- Natural rubber material with proprietary polymer blend maintains flexibility even in sub-zero temperatures
- Slip-on design fits snugly over boots and shoes
- Traction Type: Grooved
- Traction Material: Rubber



Boots not included



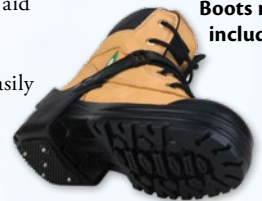
Model No.	MFG No.	Size
SHA881	V3553570-L/XL	Large/X-Large
SHA880	V3553570-S/M	Small/Medium

PROMO PRICE
43⁹⁹
/Pair

HEELSTOP ICE CLEATS



- Spark-resistant studs on the heel are made from long-lasting tungsten carbide to resist wear and tear
- Constructed of industrial quality, freeze resistant TR rubber which remains flexible even in the most extreme temperatures
- A unique, lightweight anti-slip traction aid that is proven to reduce workplace slips and falls in icy or snowy conditions
- Hook & loop strap allows the user to easily put on and remove the device
- Traction Type: Stud
- Traction Material: Tungsten Carbide



Boots not included

Model No.	MFG No.	Size
NJM115	V6770170-M	Medium
NJM114	V6770170-L	Large
NJM120	V6770170-XL	X-Large
NJM122	V6770170-2XL	2X-Large

PROMO PRICE
33⁴⁹
/Pair

MID-SOLE ICE CLEATS

- The ice-penetrating tungsten carbide spikes maximize grip while the rotatable design provides seamless transition when traction is not required (driving, climbing, and indoor use)
- Strategically placed ice-penetrating tungsten carbide spikes provide maximum traction on ice and snow
- Specially formulated rubber pad provides maximum comfort and durability even in extreme cold weather conditions
- One Size
- Traction Type: Stud
- Colour: Orange/Black



Boot not included



NJM116

Model No.	MFG No.	Profile
NJM116	V9770150-O/S	Original
SGP205	V9770250-O/S	Low
SGP206	V9770350-O/S	High

PROMO PRICE
29⁹⁹
/Pair

INTRINSIC MID-SOLE ICE CLEATS **K1** SERIES

- One-size-fits-all winter traction solution
- Intrinsic design is certified to prevent sparking when working in areas where combustible materials may be present
- Proud to be the only fully certified intrinsic ice-cleat brand in North America
- Strategically placed ice-penetrating spikes provide maximum traction on ice and snow
- Traction Type: Stud
- Traction Material: Polymer Blend
- Colour: Yellow/Orange/Black



Boot not included

Model No.	MFG No.	Profile
SGN995	V8770160-O/S	Original
SGP210	V8770260-O/S	Low
SGU818	V8770360-O/S	High

PROMO PRICE
40⁹⁹
/Pair

ZX-30° PREMIUM FOAM PVC PALM COATED ACRYLIC LINED GLOVES

- Foam PVC palm coating offers excellent breathability, dexterity and durability, while providing a superior wet or dry grip
- 15-gauge seamless nylon/spandex shell with 100% acrylic lining for superior cold protection
- Uncoated back permits breathability and limits perspiration
- Exceptional comfort and fit
- Resists abrasions, cuts and punctures
- Sanitized' coating inhibits bacteria, minimizes odour development, and Pricetes freshness
- Meets EN 511 standards for Extreme Cold Protection maintaining flexibility in temperatures up to -50°C



SFQ726



SGW876



SGW880

Model No.	Size	Coating Style	PROMO PRICE
SGW876	8	3/4 Dipped	8.25/Pair
SGW877	9	3/4 Dipped	8.25/Pair
SGW878	10	3/4 Dipped	8.25/Pair
SGW879	11	3/4 Dipped	8.25/Pair
SGW880	8	Full Dip	8.95/Pair
SGW881	9	Full Dip	8.95/Pair
SGW882	10	Full Dip	8.95/Pair
SGW883	11	Full Dip	8.95/Pair
SFQ726	8	Dipped Palm	7.25/Pair
SFQ727	9	Dipped Palm	7.25/Pair
SFQ728	10	Dipped Palm	7.25/Pair
SFQ729	11	Dipped Palm	7.25/Pair

BOA-LINED PREMIUM GRAIN LEATHER MITTS

- Full boa lining provides superior warmth and comfort
- Premium grain cowhide leather has excellent abrasion resistance
- Double-shirred elastic front provides optimal fit
- Suitable for cold weather applications and environments
- Size: Large



Model No. SGF640

PROMO PRICE
10⁵⁰ /Pair

PVC WINTER LINED GLOVES

- Bright orange PVC with rough finish
- Foam fleece lining offers added warmth
- Resistant to most oils, acids, greases and solvents



Model No.	Cuff Style	PROMO PRICE
SDN590	Knit Wrist	5.25/Pair
SDN591	12" Gauntlet	7.75/Pair
SDN592	Safety Cuff	5.95/Pair

GOAT GRAIN STANDARD QUALITY FLEECE-LINED GLOVES

- Standard quality goat grain palm and index leather
- Split cowhide leather back and cuff construction
- Hook and loop tab for adjustable fit
- 5" cuff provides superior protection
- Exceptional dexterity
- Palm and back cotton fleece liner provides added warmth



Model No.	Size	PROMO PRICE
SEE313	Medium	9.95/Pair
SEE314	Large	10.25/Pair
SEE315	X-Large	11.90/Pair

THERMAL GLOVE LINER

- Keep hands warm in cold environments
- Can be used on its own or as a glove liner
- Polyester offers resistance to water absorption, remaining lightweight even when wet
- Ambidextrous
- Size: Large
- Gauge: 13



Model No. SGH425

PROMO PRICE
4³⁵ /Pair

HPPE FOAM NITRILE COATED ACRYLIC LINED GLOVES - CUT A4

- Foam nitrile palm coating provides excellent grip in light oil, greasy and wet conditions
- Acrylic lining provides superior warmth and comfort in cold weather applications
- Stretchable seamless HPPE liner
- HPPE (high-performance polyethylene) liner is an extremely strong fibre
- Suitable for indoor and/or outdoor cold weather applications
- Cut Resistance: ASTM ANSI Level A4
- Gauge: 13



PROMO PRICE

6.50
/Pair

Model No.	Size
SGF948	7
SGF949	8
SGF950	9
SGF951	10
SGF952	11

NATURAL RUBBER LATEX FLEECE LINED GLOVES

- Natural rubber latex palm coating
- 10-gauge seamless knitted poly/cotton shell
- Premium fleece lining
- Resists abrasion, cuts and punctures
- Coating Style: Dipped Palm
- Cuff Style: Knit



PROMO PRICE

2.75
/Pair

Model No.	Size
SGV157	Medium
SGV158	Large
SGV159	X-Large
SGV160	2X-Large

NATURAL RUBBER LATEX FLEECE LINED COATED GLOVES

- Natural rubber latex palm coating
- 10-gauge seamless knitted poly/cotton shell
- Light fleece lining
- Resists abrasion, cuts and punctures
- Exceptional comfort and fit
- Textured coating provides superior wet and dry grip
- Knit wrist provides secure fit



PROMO PRICE

1.45
/Pair

Model No.	Size
SAN431	8
SAN432	9
SAN433	10
SAN434	11

HIGH VISIBILITY ACRYLIC LINED GLOVES

- Natural latex palm coating
- 100% acrylic thermal lining offers superior cold protection
- Resists abrasions, cuts and punctures
- Exceptional comfort and fit
- Uncoated back permits breathability and limits perspiration
- Crinkle finish coating provides superior wet and dry grip
- Accepted for use in Canadian food processing facilities



PROMO PRICE

2.35
/Pair

Model No.	Size
SEC797	7
SEC798	8
SEC799	9
SEC800	10
SEC801	11

SPLIT COWHIDE FITTERS COTTON FLEECE-LINED GLOVES

- Standard quality
- Good abrasion resistance
- Safety cuff
- Full leather-tipped fingers and knuckle strap



Model No.	Size	PROMO PRICE
SD613	Large	4.40/Pair
SAP299	X-Large	4.55/Pair

SPLIT COWHIDE FITTERS ACRYLIC BOA-LINED GLOVES

- Premium quality
- Provides superior warmth
- Good abrasion resistance
- Full leather tipped fingers and knuckle strap provides increased protection
- Rubberized safety cuff



Model No.	Size	PROMO PRICE
SD614	Large	4.95/Pair
SAP247	X-Large	5.20/Pair
SDL890	2X-Large	5.50/Pair

GRAIN COWHIDE FITTERS COTTON FLEECE-LINED PATCH PALM GLOVES

- Superior abrasion resistance
- Provides moderate warmth
- Excellent comfort and durability
- Resists oil and water well
- Patch palm design
- Rubberized safety cuff
- Full leather-tipped fingers and knuckle strap



Applications:

Moderate cold material handling, fabrication, metal handling and construction



Model No.	Size	PROMO PRICE
SR521	Large	5.15/Pair
SAM023	X-Large	5.35/Pair
SDL881	2X-Large	5.65/Pair

GRAIN COWHIDE FITTERS FOAM FLEECE-LINED GLOVES

- Standard quality
- Provides excellent warmth
- Superior abrasion resistance
- Excellent comfort and durability
- Resists oil and water well
- Rubberized safety cuff
- Full leather-tipped fingers and knuckle strap



Model No.	Size	PROMO PRICE
SM611	Large	6.65/Pair
SDL891	X-Large	7.05/Pair



GRAIN COWHIDE FURNITURE LEATHER COTTON FLEECE-LINED GLOVES

- Smooth grain leather finish
- Full cotton fleece provides moderate warmth
- Resists oil and water
- Durable, tough furniture leather construction
- Patch palm and safety cuff provide added protection
- Size: Large



Model No.	PROMO PRICE
SEA198	3.65/Pair



GRAIN PIGSKIN FITTERS COTTON FLEECE-LINED GLOVES

- Standard quality
- Smooth top grain construction
- Good abrasion resistance
- Provides moderate warmth
- Superior comfort and breathability
- Good dexterity
- Performs well in wet applications
- Full leather tipped fingers and knuckle strap
- Size: Large



Model No.	PROMO PRICE
SAP295	5.79/Pair



PREMIUM QUALITY GRAIN PIGSKIN FOAM FLEECE LINED GLOVES

- Fitter glove with shorter driver style cuff
- Premium quality pigskin leather construction
- Superior performance in wet applications
- Good abrasion resistance
- Full leather tipped fingers and knuckle strap
- Full red foam fleece lining provides excellent warmth



Model No.	Size	PROMO PRICE
SDL465	Small	7.15/Pair
SDL021	Medium	7.30/Pair
SDS860	Large	7.40/Pair
SDS861	X-Large	7.50/Pair
SDN053	2X-Large	7.60/Pair



GRAIN FURNITURE LEATHER FITTERS ACRYLIC BOA-LINED GLOVES

- Excellent abrasion resistance
- Provides superior warmth
- Resists oil and water well
- Patch palm design
- Starched safety cuff
- Full leather-tipped fingers and knuckle strap
- Smooth grain leather finish



Model No.	Size	PROMO PRICE
SAP290	Large	5.20/Pair
SDL886	X-Large	5.40/Pair
SDL887	2X-Large	5.55/Pair



THINSULATE™-LINED GRAIN COWHIDE FITTERS GLOVES



SEH040



SM613

- Provides superior warmth
- Provides good dexterity
- Superior abrasion resistance
- Excellent comfort and durability
 - Resists oil and water absorption better than split leather
 - Rubberized cuff for ultimate protection

Model No.	Size	Lining Weight (g)	PROMO PRICE
-----------	------	-------------------	-------------

STANDARD QUALITY

SEH040	Large	100	7.20/Pair
SEI642*	Large	40	6.30/Pair

PREMIUM QUALITY

SAS501	Ladies	100	7.75/Pair
SM613	Large	100	8.30/Pair
SAP246	X-Large	100	8.55/Pair
SDL885	2X-Large	100	9.65/Pair

* Patch Palm

THINSULATE™-LINED GRAIN PIGSKIN FITTERS GLOVES

- Premium quality
- Good abrasion resistance
- Provides superior warmth
- Superior comfort and breathability
- Performs well in wet applications
- Good dexterity
- Full leather-tipped fingers and knuckle strap
- Rubberized safety cuff
- 100-g Thinsulate™ lining



SM615

Model No.	Size	PROMO PRICE
-----------	------	-------------

SM615	Large	7.80/Pair
SAP251	X-Large	7.90/Pair
SDL892	2X-Large	8.55/Pair

GRAIN COWHIDE FITTERS COTTON FLEECE-LINED GLOVES

- Standard quality
- Full cotton fleece lining
- Superior abrasion resistance
- Excellent comfort and durability
- Resists oil and water well
- Rubberized safety cuff
- Full leather tipped fingers and knuckle strap



SM610

Model No.	Size	PROMO PRICE
-----------	------	-------------

SM610	Ladies	5.60/Pair
SD605	Large	5.75/Pair
SEF236*	Large	6.15/Pair
SAP245	X-Large	5.85/Pair

* Gauntlet Cuff

THINSULATE™-LINED SPLIT COWHIDE FITTERS GLOVES

- Premium quality
- Good abrasion resistance
- Provides superior warmth
- Good dexterity
- Rubberized safety cuff
- Full leather tipped fingers and knuckle strap
- Lining Weight: 100 g



SAP249

Model No.	Size	Colour	PROMO PRICE
-----------	------	--------	-------------

SAS500	Ladies	Red/Grey	5.85/Pair
SAN637	Medium	Yellow/Grey	5.90/Pair
SAL544*	Large	Yellow/Black	5.65/Pair
SM609	Large	Red/Black	6.25/Pair
SAP248	X-Large	Blue/Black	6.45/Pair
SAP249	2X-Large	Green/Black	6.70/Pair

* 40-g lining weight

GRAIN PIGSKIN FITTERS ACRYLIC BOA-LINED GLOVES

- Premium Quality
- Boa lining provides superior warmth
- Performs better in wet applications than cowhide grain or split leather
- Rubberized safety cuff

SAP300



Model No.	Size	PROMO PRICE
-----------	------	-------------

SAP300	Large	6.95/Pair
SDL888	X-Large	7.25/Pair
SDL889	2X-Large	7.55/Pair

SPLIT COWHIDE FITTERS FOAM FLEECE-LINED GLOVES

- Premium quality
- Provides excellent warmth
- Good abrasion resistance
- Rubberized cuff
- Full leather tipped fingers and knuckle strap



Model No.	Size	PROMO PRICE
-----------	------	-------------

SAP240	Medium	4.80/Pair
SAP241	Large	4.99/Pair
SAP242	X-Large	5.20/Pair
SDL884	2X-Large	5.40/Pair

HI-VIZ SPLIT COWHIDE FITTERS THINSULATE™-LINED GLOVES

SED161

- Premium quality
- Good abrasion resistance
- 100-g Thinsulate™ liner provides superior warmth
- Full leather tipped fingers and knuckle strap
- Fluorescent back and two gray reflective stripes offer maximum visibility
- Rubberized safety cuff



Model No.	Size	Colour	PROMO PRICE
SED161	Large	Yellow	6.45/Pair
SEK238	Large	Orange	6.45/Pair

HI-VIZ GRAIN COWHIDE FITTERS THINSULATE™-LINED GLOVES

- Premium quality
- 100-g Thinsulate™ liner provides superior warmth
- Superior abrasion resistance
- Excellent comfort and durability
- Resists oil and water well
- Full leather tipped fingers and knuckle strap
- Fluorescent back and two gray reflective stripes offer maximum visibility
- Rubberized safety cuff



Model No.	Size	Colour	PROMO PRICE
SED428	Large	Yellow	9.15/Pair
SEK237	Large	Orange	9.15/Pair

GRAIN COWHIDE FITTERS ACRYLIC BOA-LINED GLOVES

- Provides superior warmth
- Superior abrasion resistance
- Excellent comfort and durability
- Resists oil and water well
- Full leather tipped fingers and knuckle strap
- Rubberized safety cuff



Model No.	Size	PROMO PRICE
STANDARD QUALITY		
SEI681*	Large	5.75/Pair
PREMIUM QUALITY		
SAO053	Large	7.40/Pair
SDL882	X-Large	7.80/Pair
SDL883	2X-Large	8.05/Pair

* Patch Palm

GRAIN COWHIDE DRIVERS & ROPERS FLEECE LINED GLOVES

- Superior abrasion resistance
- Resists oil and water well
- Excellent comfort and durability
- Provides moderate warmth
- Drivers' style comes with elastic wrist
- Ropers' style comes with adjustable strap with snap



Model No.	Size	Style	PROMO PRICE
SM616	Small	Drivers	6.25/Pair
SM617	Medium	Drivers	6.55/Pair
SM618	Large	Drivers	6.75/Pair
SM619	X-Large	Drivers	6.99/Pair
SAP250	2X-Large	Drivers	7.50/Pair
SAP215	Small	Ropers	7.75/Pair
SAP216	Medium	Ropers	8.15/Pair
SAP217	Large	Ropers	8.50/Pair
SAP218	X-Large	Ropers	8.95/Pair

PREMIUM GRAIN COWHIDE DRIVERS & ROPERS FLEECE-LINED GLOVES

- Superior abrasion resistance
- Resists oil and water well
- Excellent comfort and durability
- Provides moderate warmth
- Drivers' style comes with elastic wrist
- Ropers' style comes with adjustable strap with snap



Model No.	Size	Style	PROMO PRICE
SFV195	Small	Drivers	7.55/Pair
SFV196	Medium	Drivers	7.65/Pair
SFV197	Large	Drivers	8.35/Pair
SFV198	X-Large	Drivers	8.55/Pair
SFV187	Small	Ropers	8.85/Pair
SFV188	Medium	Ropers	8.95/Pair
SFV189	Large	Ropers	9.25/Pair
SFV190	X-Large	Ropers	9.50/Pair

PORTABLE FAN-FORCED CONVECTION HEATER

- Two heat settings (1500 W and 750 W) provide full comfort and efficient operation
- Adjustable thermostat
- Wide-angle oscillation
- Tip over safety switch and thermal limit control
- Min. BTU Rating: 2560 BTU/H
- Max. BTU Rating: 5200 BTU/H
- Amperage: 6.25 A/12.5 A



PROMO PRICE

41⁷⁵

Model No.
EA597

PORTABLE FAN FORCED UTILITY HEATER

- Three heat settings provides full comfort and efficient operation
- 600 W radiant
- 900 W fan forced
- 1500 W fan forced and radiant
- Chrome-plated safety grill
- Automatic built-in thermostat
- Ceramic core element
- Tip over safety switch and thermal limit
- Min. BTU Rating: 2048 BTU/H
- Max. BTU Rating: 5120 BTU/H
- Amperage: 5 A/12.5 A



PROMO PRICE

125⁰⁰

Model No.
EA466

PORTABLE OPEN COIL HEATER

- Two heat settings (1500 W and 1000 W)
- Provides full comfort and efficient operation
- Fully adjustable automatic thermostat
- Safety overload switch
- Power signal light
- Top mounted handle and controls
- Grounded plug and controls
- Type: Radiant Heat
- Min. BTU Rating: 3410 BTU/H
- Max. BTU Rating: 5200 BTU/H
- Amperage: 8.3 A/12.5 A



PROMO PRICE

72¹⁵

Model No.
EA469

PORTABLE HEATER

- Two heat settings (1500 W and 750 W) provide full comfort and efficient operation
- Adjustable thermostat
- PTC heating element
- Tip over safety switch and thermal safety fuse
- Type: Ceramic
- Min. BTU Rating: 2560 BTU/H
- Max. BTU Rating: 5200 BTU/H
- Amperage: 6.25 A/12.5 A



PROMO PRICE

58²⁵

Model No.
EA599

PORTABLE HEATER

- Two heat settings (1500 W and 750 W) provide full comfort and efficient operation
- Adjustable thermostat
- Tip over safety switch and thermal safety fuse
- Type: Ceramic
- Min. BTU Rating: 2557 BTU/H
- Max. BTU Rating: 5115 BTU/H



PROMO PRICE

53⁴⁰

Model No.
EB182

PORTABLE CERAMIC HEATER

- Two heat settings (1500 W and 900 W) provide full comfort and efficient operation
- Adjustable thermostat
- Big carry handle
- Adjustable vertical tilt angle
- Min. BTU Rating: 2560 BTU/H
- Max. BTU Rating: 5200 BTU/H
- Voltage: 120 V



PROMO PRICE

91⁸⁵

Model No.
EA650

PORTABLE HEATER

- Two heat settings (1500 W and 750 W) provide full comfort and efficient operation
- Adjustable thermostat
- Fan-forced with wire heating element
- Tip over safety switch and thermal safety fuse
- Front air input and output allows heater to be put flush against a wall
- Min. BTU Rating: 2557 BTU/H
- Max. BTU Rating: 5115 BTU/H



PROMO PRICE

97⁶⁰

Model No.
EB183

OSCILLATING HEATER

- Built-in over heating protection, tip over switch and power indicator light
- Adjustable thermostat
- 2 heat settings (750 W and 1500 W) provide maximum comfort
- Includes fan only setting
- Voltage: 120 V
- Type: Ceramic
- Min. BTU Rating: 2600 BTU/H
- Max. BTU Rating: 5200 BTU/H
- Overall Dim.: 6.7" W x 5" D x 9.6" H



PROMO PRICE

61²⁵

Model No.
EB467

OSCILLATING TOWER HEATER

- Built-in over heating protection, tip over switch and power indicator light
- Adjustable thermostat
- 2 heat settings (750 W and 1500 W) provide maximum comfort
- Includes fan only setting
- Voltage: 120 V
- Type: Ceramic
- Min. BTU Rating: 2550 BTU/H
- Max. BTU Rating: 5120 BTU/H
- Overall Dim.: 7.4" W x 6.9" D x 18.5" H



PROMO PRICE

75⁵⁵

Model No.
EB020

PORTABLE INFRARED HEATER

- Provides instant sun-like heat that directly warms objects
- Adjustable thermostat
- Cool touch flame-resistant plastic housing
- Overheat and tip over shut-off
- Type: Radiant Heat
- Min. BTU Rating: 2560 BTU/H
- Max. BTU Rating: 5120 BTU/H
- Amperage: 12.5 A
- Voltage: 120 V
- Wattage: 750 W/1500 W
- Overall Dim.: 13" W x 9.3" D x 23" H



PROMO PRICE

97²⁰

Model No.
EB184

PORTABLE FAN-FORCED UTILITY HEATER

- Two heat settings (1300 W and 1500 W) provide full comfort and economic operation
- Adjustable thermostat
- Fan-only setting
- Tip over safety switch
- Built-in carrying handle with front safety guards
- Min. BTU Rating: 4435 BTU/H
- Max. BTU Rating: 5120 BTU/H
- Amperage: 10.8 A/12.5 A



PROMO PRICE

51⁴⁵

Model No.
EA598

PATIO HEATER

- High efficiency heating
- IP65 rated for outdoor use
- Remote and pull-string control
- Two LED lights
- 3 heat settings (500 W/1000 W/1500 W)
- Type: Wall
- Min. BTU Rating: 1705 BTU/H
- Max. BTU Rating: 5115 BTU/H



PROMO PRICE
224⁰⁰



Model No.
EB307

OIL FILLED HEATER

- 7-fin, oil-filled heater
- Three heat settings provide full comfort and efficient operation
- Adjustable thermostat
- Built-in over heating protection
- Tip-over safety protection
- Min. BTU Rating: 2048 BTU/H
- Max. BTU Rating: 5120 BUT/H
- Voltage: 120 V
- Min. Wattage: 600 W
- Max. Wattage 1500 W
- Amperage: 5 A/12.5 A



Model No.
EA612

PROMO PRICE
89⁶⁵

HEAVY-DUTY CEILING MOUNT HEATERS

- Built-in ceiling bracket for easy mounting
- Automatic fan delay
- Rugged heavy-duty industrial heater
- Ideal for use in storage rooms, workshops, garages, warehousing
- Plug Type: Hardwire
- Voltage: 240 V
- 10-5/8" W x 12-1/2" D x 14" H



EA532

Model No.	Motor Type	BTU/H Rating		Amperage		PROMO PRICE
		Min.	Max.	Min.	Max.	
EA532	Open	8530	17060	10.41 A	20.83 A	235.00
EA652	Closed	8530	25600	26.5 A	31.3 A	405.00

PORTABLE SALAMANDER HEATER

- Manufactured for long lasting, this portable heater for warehouses, factories, garages, construction sites, pavilions and other open areas, raise temperature to the desired level gradually for worksite comfort
- Adjustable thermostat
- Adjustable tilt angle
- Mounted on 10" solid rubber wheels
- Over heat protection
- Easy to move to different areas of the site
- Variable speed setting, fan forced
- Max. BTU Rating: 34 121 BTU/H
- Fan Motor Type: Enclosed air over, Ball bearing
- Type: Contractor
- Voltage: 240 V
- Wattage: 10080 W



Model No.
EA786

PROMO PRICE
1235⁰⁰

FAN FORCED CONTRACTOR HEATERS

- Built-in thermostat
- Safety high temperature limit
- Built-in handle/cord storage
- Permanently lubricated motor
- 6' heavy-duty cord
- Steel spiral fan brazed to metal sheath elements for maximum heat transfer
- Voltage: 240 V
- Plug Type: #6-30P



EB100

Model No.	Motor Type	BTU/H Rating	Amperage	Wattage	PROMO PRICE
EA477	Open	19100	23.34 A	5600	227.00
EB100	Closed	16380	20 A	4800	179.00

HEAVY-DUTY TILTED HEATER

- Industrial finger proof steel intake/discharge grills
- Durable metal construction with enclosed motor
- One-speed fan only function
- Built-in over heating protection
- Air flow direction adjustable from 10°-50°
- Adjustable thermostat
- Energy-saving
- Convenient carrying handle
- Forced-air heater function
- Safety shutoff function
- Max. BTU Rating: 19107 BTU/H
- Max. Temperature: 100°F
- Type: Ceramic
- Voltage: 240 V • Amperage: 23.3 A
- Wattage: 5600 W • Cord Length: 6'



PROMO PRICE

263⁰⁰



Model No. EB021

AIR CURTAINS WITH REMOTE CONTROL

- Maintains indoor air quality and saves energy by minimizing air loss through open doorways
- Prevents dust, odours, fumes, and insects, from entering indoors through powerful air flow
- Airflow directed by oscillating louvers
- Mount on the interior of doors, windows, or walls
- Features a 5' long power cord with grounded NEMA 5-15 plug
- Voltage: 120 V
- Maximum Door Height: 10'
- Phase: 1
- Decibels: 56
- Hertz: 60



EB290

Model No.	W"	x	Dim.		CFM		PROMO PRICE
			D"	x H"	High	Low	
EB290	36	x	8-1/2	x 8-5/8	815	670	229.00
EB291	48	x	8-1/2	x 8-5/8	990	816	367.00

PERSONAL METAL SHOP HEATER WITH THERMOSTAT



- Features 3 settings for fan-only, high heat, and low heat
- Automatic overheat protection
- Durable sturdy steel cabinet
- Easy carry handle
- Type: Fan
- Certifications: cETL
- Power: 750 W & 1500 W
- Voltage: 120 V
- Heat Coverage: 800-1000 sq.ft.
- Power Cord Length: 6'
- Plug Type: Standard



PROMO PRICE

42¹⁵

Model No. EB479

360 DEGREE SURROUND PORTABLE HEATER



- Features 360 degree outlet air, PTC heating elements, adjustable thermostat, tip-over switch, overheat protection, and carry handle
- Features 2 heat settings (750 W & 1500 W) and a fan-only setting
- Type: Ceramic
- Max BTU Rating: 5200 BTU/H
- Voltage: 120 V
- Amperage: 12.5 A
- Power Cord Length: 6'
- Plug Type: Standard



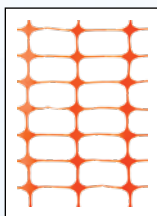
PROMO PRICE

53¹⁵

Model No. EB480

SNOW FENCE

- Provides an economical, easy and reliable protection barrier
- Lightweight, reusable and durable for easy handling
- Made of strong high density polyethylene with high tear resistance
- Stronger than competitive non-oriented fence
- Colour: Orange
- Roll Length: 50'
- Roll Width: 4'



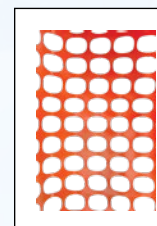
PROMO PRICE

16⁴⁰

Model No. SHB329

HEAVY-DUTY SAFETY FENCE

- Protects plants from freezing rain and heavy snowfall
- Provides an economical, easy and reliable protection barrier
- Lightweight, reusable and durable for easy handling
- Made of strong high density polyethylene with high tear resistance
- Colour: Orange
- Roll Length: 100'
- Roll Width: 4'



PROMO PRICE

52⁶⁵

Model No. SHC245

THERM™ HEATED VEST

- Designed to be worn as a base layer over a shirt, or any thermal garment
- Lightweight, active fit one size fits all includes durable two-way locking hook and loop straps
- Heating elements located on the chest and back, warming a large surface area to Pricete blood circulation, relief from muscle pain, enhance metabolism and improve immunity
- Low, Medium, High temperature ranges
- Colour: Black
- Men's one size



PROMO PRICE

139⁹⁵

Model No. SHA658
MFG No. PC300HV100U

HOTSPOTTER ALL-PURPOSE PROPANE TORCH KIT

- Works off the pressure of a propane tank, no regulator required
- Heavy-duty kit with durable cast iron and steel nozzle
- 500 000 BTU rating
- Ideal for a wide variety of all-season maintenance/repair applications
- **Includes:** 10' neoprene hose, striker and on/off valve



PROMO PRICE

145⁰⁰

Model No. 312-4904
MFG No. WB-101

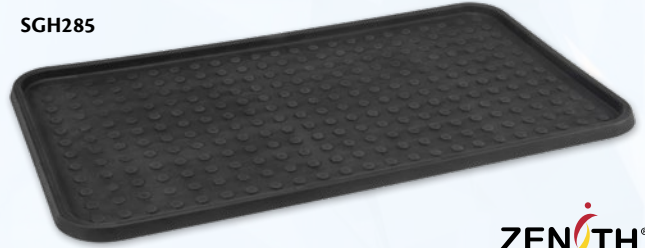


BOOT TRAYS

- Keeps dirt and moisture off floors
- Durable plastic construction with a raised edge to corral melting snow, mud or salt
- Great for entryways, garages or closets

Model No.	Dimensions			Thickness"	PROMO PRICE
	L"	x	W"		
SGH285	25	x	14	0.6	5.20
SGU858	19	x	39	1.18	10.20

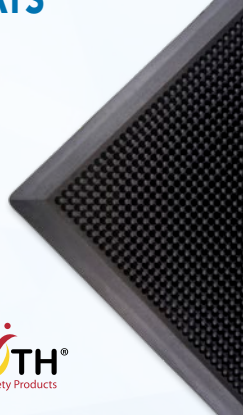
SGH285



ZENITH[®]
Safety Products

OUTDOOR ENTRANCE MATS

- Scrape shoes and boots clean to avoid tracking dirt, slush, and snow
- Durable rubber mat resists harsh weather conditions
- Numerous rubber fingers are ideal for trapping dirt
- Beveled edging to help prevent tripping
- Easy to clean
- Traffic: Heavy Duty
- Surface Pattern: Textured
- Thickness 1/2"



ZENITH[®]
Safety Products

Model No.	Dimensions			PROMO PRICE
	W'	x	L'	
SFQ527	2	x	2-2/3	46.35
SFQ528	2-2/3	x	3-1/4	63.85
SFQ529	2-1/3	x	3-5/6	77.55
SFQ530	3	x	5	109.00
SFQ531	3	x	6	120.00

BOOT SCRAPER

- Scrape shoes and boots clean to avoid tracking dirt, slush, and snow
- Rubber fingers brush the sides and bottom of boots
- Portable or can be made fixed (mounting hardware not included)
- Easy to clean
- Overall Length: 12"

PROMO PRICE

28⁸⁵

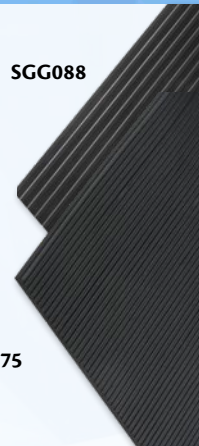


ZENITH[®]
Safety Products

Model No. SFQ526

RUNNER MATS

- Durable rubber mat resists harsh weather conditions
- Easy to clean
- Adds traction to any entrance
- Traffic: Light-Medium
- Thickness: 1/8"
- Surface Pattern: Ribbed
- Style: Runner
- Type: Wiper



SGG088

SDL875

ZENITH[®]
Safety Products

Model No.	Dimensions			PROMO PRICE
	W'	x	L'	
WIDE-RIBBED				
SGG088	3	x	75	407.00
FINE RIBBED				
SDL875	2	x	75	267.00
SDL876	3	x	75	373.00
SDL877	4	x	75	527.00

LOW PROFILE MATS

- Scrape shoes and boots clean to avoid tracking dirt, slush, and snow
- Durable rubber mat resists harsh weather conditions
- Low profile design
- Traffic: Medium-Heavy
- Thickness: 5/16"
- Easy to clean
- Type: Scraper
- 3' W x 5' L

SDL871



SDL872

ZENITH[®]
Safety Products

Model No.	Description	PROMO PRICE
SDL871	Solid	51.05
SDL872	Slotted	55.20

FIRESTORM™ INTENSE ICE MELTER

- Prevents refreezing even under the most challenging conditions
- Safe for children and pets, will not burn skin and gentle on vegetation
- Container Size: 44 lbs. (20 kg)
- Melting Point: -32°C (-25°F)
- Distinctive orange colour is easy to see, allowing you to use less while ensuring safety for pedestrians



Model No.	MFG No.	PROMO PRICE
JB597	F0042B	32.37/Bag

NATURAL CHOICE™ ICE MELTER

- All-natural ice melter with an organic additive that improves its performance
- This additive also acts as a corrosion inhibitor to reduce metal fatigue
- Eco-friendly ice melter
- Container Size: 44 lbs. (20 kg)
- Melting Point: -24°C (-11°F)



Model No.	MFG No.	PROMO PRICE
NJ140	N0051B	28.67/Bag

SALT & SAND SCOOPS

- Polyethylene scoop ideal for salt and sand, compost and animal feed



PE095



JK232



PE096

Model No.	Colour	Capacity	PROMO PRICE
PE095	Yellow	1 gal.	22.95
PE096	White	1 gal.	23.95
JK232	Yellow	2 L	5.99

SALT & SAND CONTAINERS

- Waterproof and lockable which makes it ideal for many other outdoor storage uses aside from storing loose or bagged salt, sand, or ice melter
- It can also hold garden supplies, sporting goods, pool supplies, tools, garbage/recyclables, or anything else you want to safely store
- Constructed of rugged BPA-free UV-resistant polyethylene
- Built-in pockets for forklifts allow the bins to be moved without emptying them
- Capacity: 4.24 cu. ft.
- 21" L x 27" W x 26" H



NO614



NO615

Model No.	Colour	PROMO PRICE
NO614	Yellow	132.00
NO615	Grey	132.00

HEAVY-DUTY OUTDOOR STORAGE CONTAINERS

- Thick-walled, durable polyethylene construction
- Double-walled reinforced lid
- Molded forklift channels and recessed hand holes



ND337



NM948

Model No.	Colour	Capacity cu. ft.	PROMO PRICE
30" L X 24" W X 24" H			
ND337	Yellow	5.5	199.00
ND202	Grey	5.5	199.00
48" L X 24" W X 24" H			
NM947	Yellow	10	299.00
NM948	Grey	10	299.00

SOS™ SALT & SAND CONTAINERS

- Roto molded of LLDPE
 - Impact resistant
- Double wall lockable lid
- Stands up to severe climate and weather conditions
 - Capacity: 11 cu. ft.
- Load Capacity: 1000 lbs.
 - 42" L x 29" W x 30" H



ND702



ND703



Model No.	MFG No.	Colour	PROMO PRICE
ND702	SOS 11Y	Yellow	305.00
ND703	SOS 11G	Grey	305.00

SNOW BRUSHES

- Aluminum handle with comfortable EVA foam grip
- Blade Type: Polypropylene
- Scraper Width: 4-1/4"

NM980:

- Telescopic handle has extended length of 32-1/2" and collapsed length of 23-1/2"

NN434:

- Soft EVA foam to prevent scratches
- Extends from 33" to 48"
- Rotating head with plastic bristles
- Handle Material: Plastic

AURORA
TOOLS



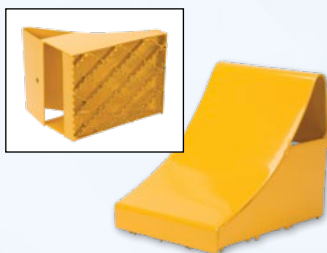
Model No.	Description	Head Width"	Overall Length"	PROMO PRICE
NM979	Non Telescopic	8-3/4	34	9.20
NM980	Telescopic	9-3/4	32-1/2	10.65
NN434	Telescopic	12-3/4	48	18.05

ICE CHOCK

- Formed steel
- "Tooth" like bottom assures reliable grip
- Lightweight and dependable
- Maximum holding power for snow and ice
- Powder-coated safety yellow finish for high visibility
- Max. Tire Diameter: 20"
- Dimensions: 8" W x 10-1/2" D x 9-1/4" H
- Weight: 9 lbs.

PROMO PRICE

43⁵⁹



KLETON

Model No. KH964

SNOW FLAG

- 9" x 12" triangle-shaped flag with 6' fiberglass pole
- Mark fire hydrants, valves, trails, or other landmarks in snow-prone areas
- Flags are made of high-visibility, red vinyl fabric able to withstand low temperatures
- Flag Pole Diameter: 1/2"
- Height: 6'

ZENITH
Safety Products

PROMO PRICE

6¹⁵

Model No. SGG309

ALL WEATHER TPE-RUBBER EXTENSION CORDS

- Designed for industrial and contractor use
- All-weather jacket provides ultra flexibility and superior performance in extreme climate conditions at temperatures from -50°C to 105°C
- Provides outstanding resistance against rough use, sunlight, chemicals and moisture
- Water-resistant and flame retardant
- Lighted connectors allow you to see when the power is in use
- Molded-on and bonded plugs and connectors resist breaking
- 3-conductor SJEOW, 300 V grounding



AURORA
TOOLS

Model No.	Gauge Length'	(AWG)	No. of Outlets	Amps	Wattage W	PROMO PRICE
-----------	---------------	-------	----------------	------	-----------	-------------

HEAVY-DUTY

XC500	25	14/3	1	15	1875	25.55
XC501	50	14/3	1	15	1875	48.60
XC502	100	14/3	1	13	1625	94.65

EXTRA HEAVY-DUTY

XC503	25	12/3	1	15	1875	37.60
XC504	50	12/3	1	15	1875	72.05
XC505	100	12/3	1	15	1875	129.00

HEAVY-DUTY

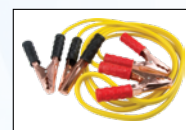
XH235	25	14/3	3	15	1875	26.15
XH236	50	14/3	3	15	1875	47.15
XH237	100	14/3	3	13	1625	97.45

EXTRA HEAVY-DUTY

XH238	25	12/3	3	15	1875	40.35
XH239	50	12/3	3	15	1875	74.15
XH240	100	12/3	3	15	1875	147.00

BOOSTER CABLES

- Clamp design fits on both top-post and side-post batteries
- Cable remains flexible in temperatures as low as -40°C
- Tangle-free
- Surge suppressor on 2, 4 and 6 gauge cables protect a vehicles computer system from power surges during boosting



XE494



XE496

AURORA
TOOLS

Model No.	Colour	Wire Gauge	Amps	Cable Length'	PROMO PRICE
-----------	--------	------------	------	---------------	-------------

XE494	Yellow	8 AWG	150	10	17.45
XE495	Red/Black	6 AWG	400	16	33.80
XE496	Red/Black	4 AWG	400	20	36.60
XE497	Red/Black	2 AWG	400	20	63.80

SNOW ROOF RAKE

- Ideal for removing any kind of debris from roofs
- Prevents roof damage by removing ice dams & heavy snow
- Lightweight handle extends to 16'
- Blade Material: Polypropylene
- Blade Width: 24-3/4"
- Blade Height: 6"
- Handle Material: Aluminum
- Handle Length: 61"
- Handle Type: Straight

AURORA
TOOLS



PROMO PRICE

63⁶⁰

Model No. NN009

POLY SNOW SHOVELS

- Blade Material: Polypropylene
- Handle Material: Steel
- Handle Type: D-Grip



AURORA
TOOLS

Model No.	Wearstrip	Blade Dim. W" x H"	Overall Length"	PROMO PRICE
NM809	Included	19-3/4 x 13-1/8	50-3/4	31.85
NM810	Not Included	19-3/4 x 13	51-3/8	30.95

POLY SNOW PUSHERS

- Powder-coated steel handle for added strength
- Ergonomic poly D-grip
- Blade Material: Polypropylene



AURORA
TOOLS

Model No.	Wearstrip	Blade Dim. W" x H"	Overall Length"	PROMO PRICE
NM812	Included	21-1/4 x 9-1/4	50-1/2	27.45
NM811	Not Included	24-1/2 x 10-3/4	54-1/2	32.45

BROADCAST SPREADERS WITH STAINLESS STEEL HARDWARE

- Metal gear inside of the gear box
- Stainless steel hardware in the hopper and pivot shaft
- Metal control handle
- Rate setting control on handle for precise adjustments
- Easy three-step assembly
- Spread Width: 10-12'
- **Includes:** Raincover, screen



AURORA
TOOLS

Model No.	Load Capacity lbs.	Coverage sq. ft.	Tire Size"	PROMO PRICE
NN138	70	15 000	10	263.00
NN139	125	27 000	14	376.00

BROADCAST SPREADERS

- Steel tube frame construction with chrome plated hardware
- Heavy-duty nylon gear box increases product life span
- Setting control on handle for precise adjustments
- 12" x 4" pneumatic tires
- Spread Width: 10-12'
- **Includes:** Raincover, screen



AURORA
TOOLS

Model No.	Load Capacity lbs.	Coverage sq. ft.	PROMO PRICE
NN137	50	11 000	197.00
NJ142	100	22 000	263.00

Pricing in effect until March 29, 2024 or while quantities last. Taxes and freight extra. FOB Montreal. Prices are subject to change and may vary without prior notice. #SCF223095NA